



Weight indicator and batching process controller -steel, IP66/67 protection-

ASCII protocols, Modbus-RTU and Ethernet TCP-IP
PROFIBUS and DeviceNet optional interfaces

Weight control, up to 50 batching recipes (recalled from the keyboard)

Fiscal memory (Alibi Memory)

Automatic prints

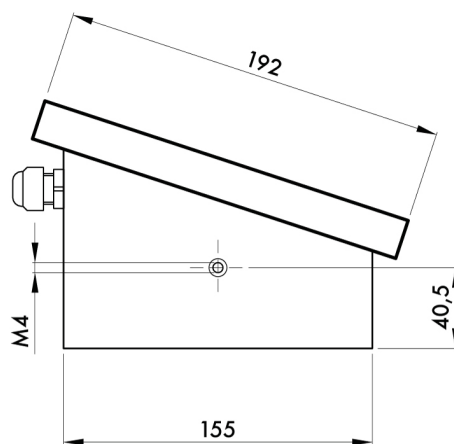
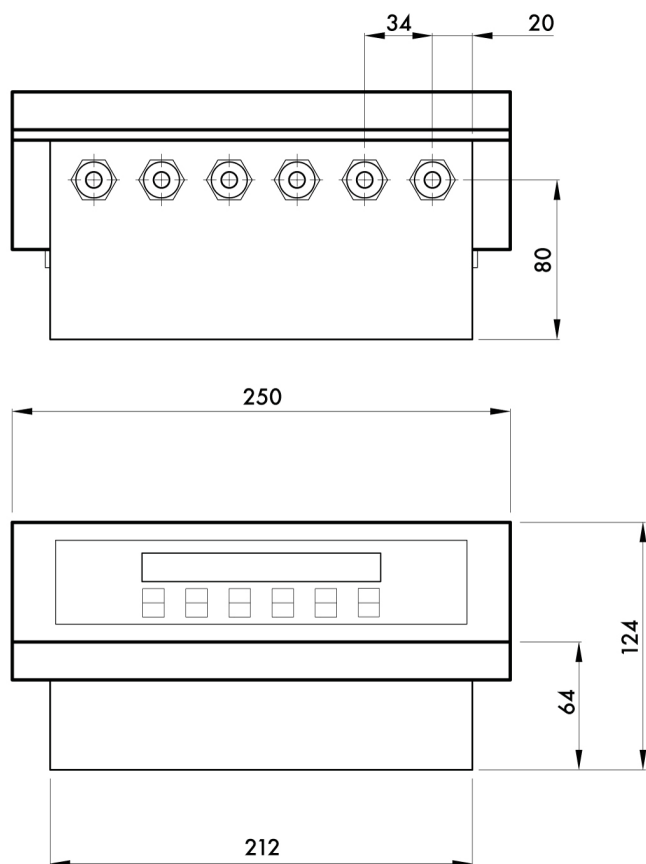
ATEX certification, IP65, 2.22 (OPTION)

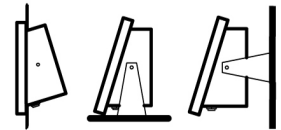
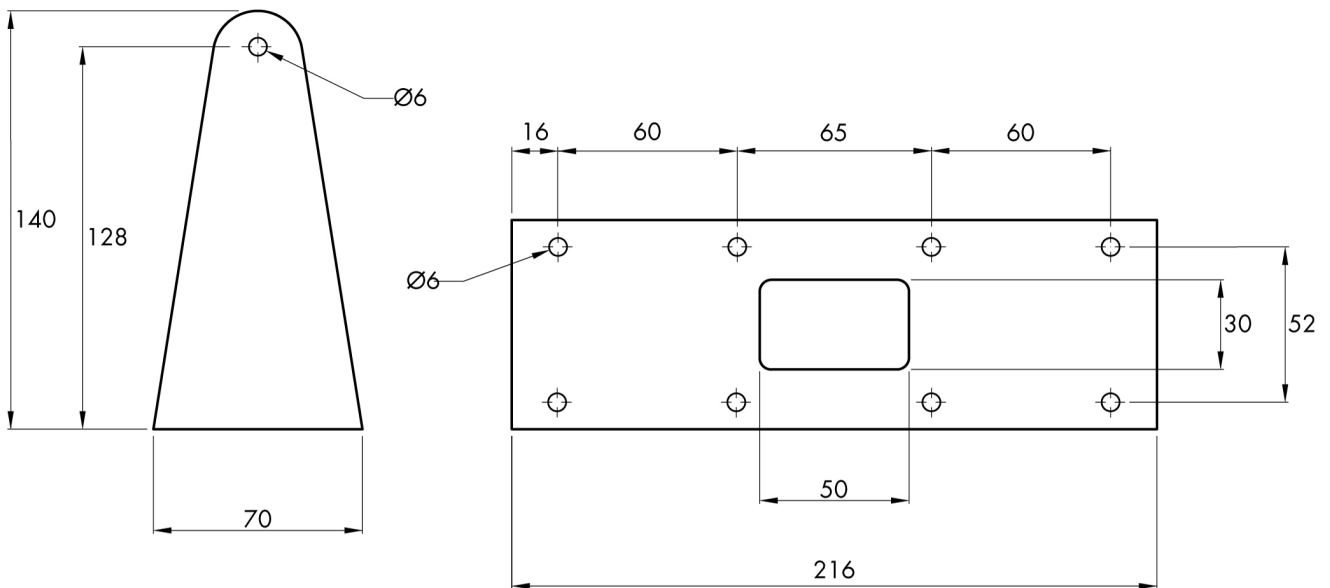
Flush, wall, column or desktop mounting

TECHNICAL CHARACTERISTICS MC S 302 (ATEX 2,22)

Trasducer input voltage:	5 V (max 8 celle da 350 Ohms)
Measuring range:	-3.9 ÷ +3.9 mV/V
Input sensitivity:	0.02 µV/ per count
Linearity:	<0.01% of full scale
Gain drift:	<0.0003% full scale/ °C
A/D Converter:	24 bit
Visible resolution:	600.000 divisions displayed on net weight
Divisions value (adjustable):	x1, x2, x5
Set decimal:	0.0 ; 0.00 ; 0.000; 0.0000
Filter:	0.2 ÷ 50 Hz. 100 Hz during dosage
Tool voltage:	230 Vac ±10% - 50/60 Hz absorbed power 7 VA (115 Vac on demand)
Temperature range:	-10 ÷ +40°C
Storage temperature:	-20 ÷ +50°C
Logic output:	6 relays (NA) MAX 115 Vac /30 Vdc 0.5 A cad.
Logic input:	8 optoisolated 12 / 24 Vcc PNP
Serial door:	COM1: RS232 half duplex max 15m COM2: RS422/RS485 half duplex max 1000m
FIELDBUS protocol:	ASCII, Modbus RTU, baud rate 1200 ÷ 115K adjustable
Regulatory compliance:	EN61326, and EN61010-1
ATEX II 3 GD EEx nR IIC IP65 T6:	EN 13463-1: 2003; EN 60529: 1991 + A1: 2000 IEC 60079-0: 2004; IEC 60079-15: 2005
Optional dosage software:	up to 12 components with external module with 8 relays aggregation of component values ??and recipe. Management and inventory control. Max 50 programmable recipes
Analog optional output:	Optically isolated 16-Bit Voltage: 0 to 5 or 0 to 10V (R> 10 Ohms); Current: 0 to 20 or 4 ÷ 20mA (R <300 Ohms); Linearity 0.03% of full scale; Temperature drift 0.001% of full scale /°C
Optional fieldbus available:	Profibus DP, DeviceNet and ETHERNET TCP-IP external mounting on DIN guide







SCIGATE AUTOMATION (S) PTE LTD

No.1 Bukit Batok Street 22 #01-01 Singapore 659592

Tel: (65) 6561 0488

Fax: (65) 6562 0588

Email: sales@scigate.com.sg

Web: www.scigate.com.sg

Business Hours: Monday - Friday 8.30am - 6.15pm

